

LAND AUCTION

12:00 Noon, Saturday, April 15, 2023

At the house, 119 S. Main Street, Barnes, Kansas

**The SE ¼ 24-4-5, less a 12 acre tract, Barnes Township,
Washington County, Kansas**

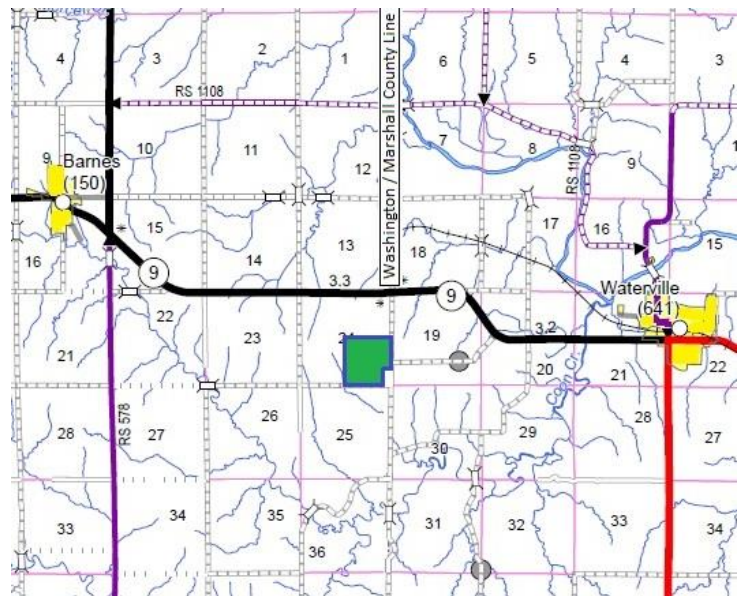
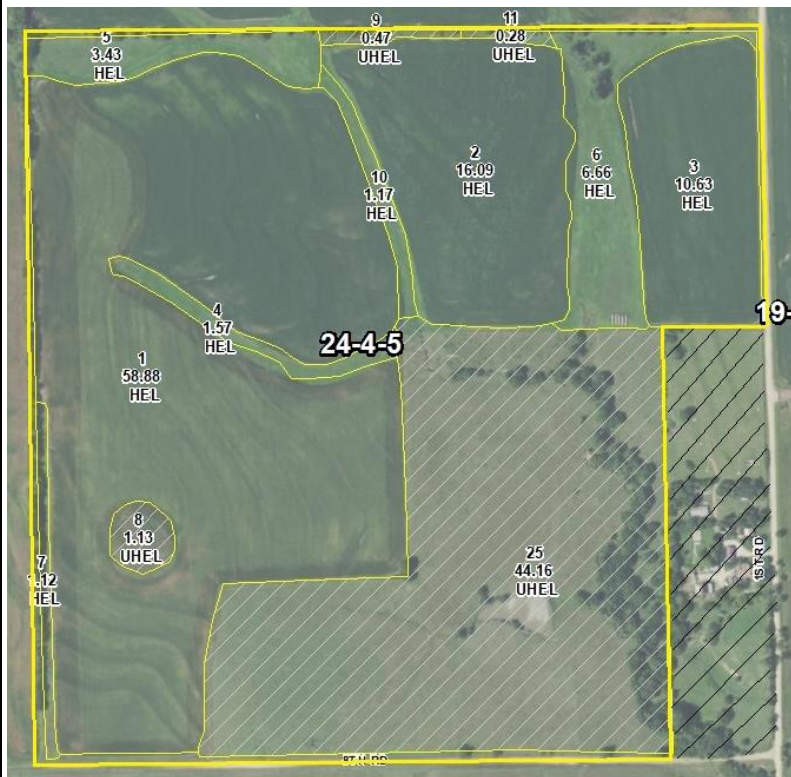
This farm, 146 acres, more or less, consists of approximately 86 acres upland cropland and 44 acres native grass pasture, with the balance being waterways and timber. The cropland soils are primarily gently sloping Crete soils. There is a large pond and the fences are good. There are no growing crops.

The FSA bases and yields are 26 acres wheat, 38 bushels; 11 acres milo, 86 bushels; and 39 acres soybeans, 37 bushels. The 2022 taxes were \$2,014.41.

This farm is well located between Barnes and Waterville, on the Washington/Marshall County Line. From Barnes, Kansas: 3 ½ miles east on Hwy 9 to County Line Road, then ½ mile south to the northeast corner of the farm. From Waterville, Kansas: 3 miles west on Hwy 9 to 1st Road, then ½ mile south to the northeast corner of the farm.

Terms: Ten percent down, the balance due in 30 days. Immediate access for spring planting and grazing. Full possession at closing.

The Estate of Beverly Weiche



Announcements the day of the auction take precedence over previous advertising.

Check our website for more maps and pictures.

This farm will be sold at the same time and place as the house & acreage, vehicle, and household items.

Bott Realty & Auction

Washington, Kansas 785-325-2734, 747-8017, or 747-6888

www.BottRealtyAuction.com

Professional Real Estate and Auction Service since 1982.